

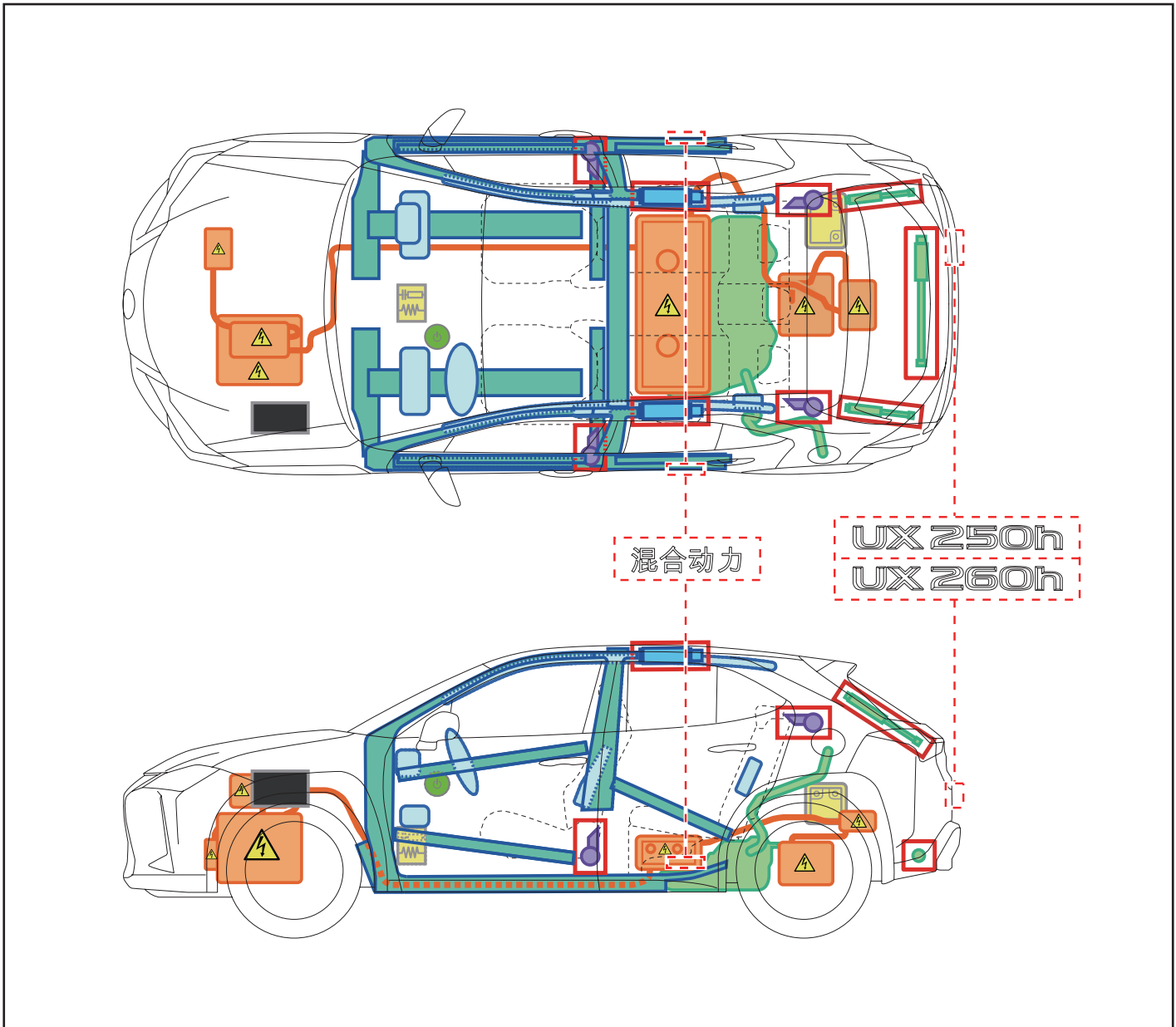
UX250h /260h

左驾驶车型

2018-10

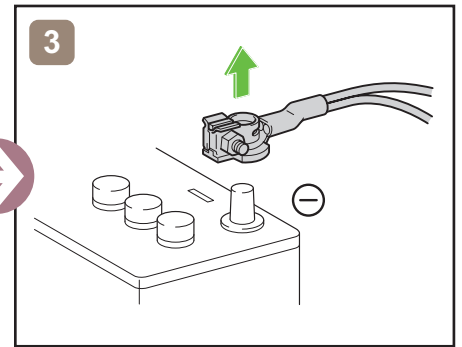
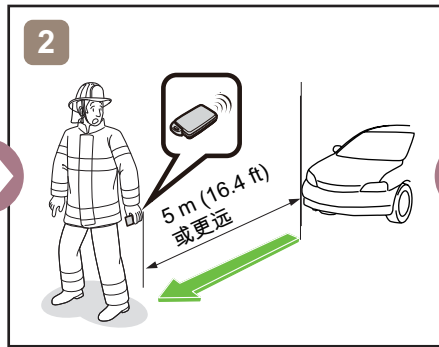
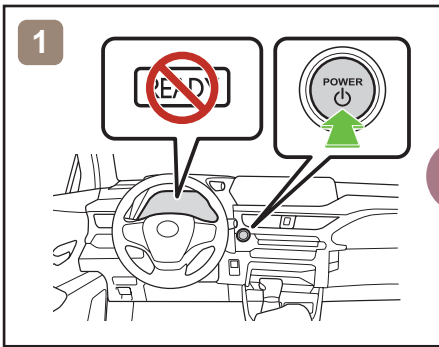


LEXUS
混合动力驱动

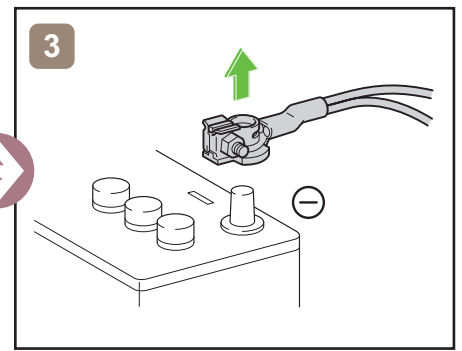
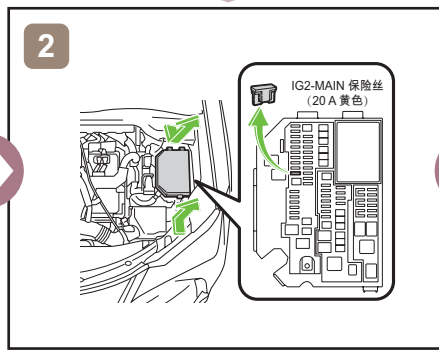
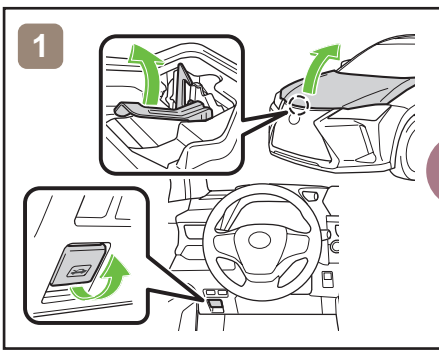


	IG/POWER 开关		保险丝盒		12V 蓄电池
	空气囊 (包括充气装置)		充气装置		高压蓄电池
	高压零部件		燃油箱		充气式减振器
	座椅安全带预紧器 (气体发生器)		结构加强件		空气囊计算器
-	-	-	-	-	-

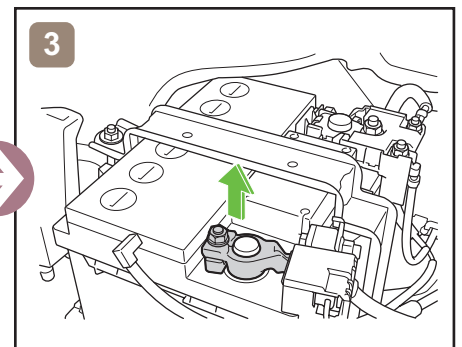
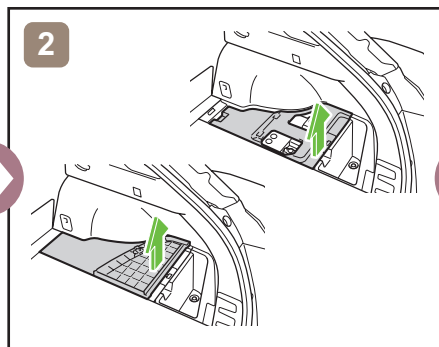
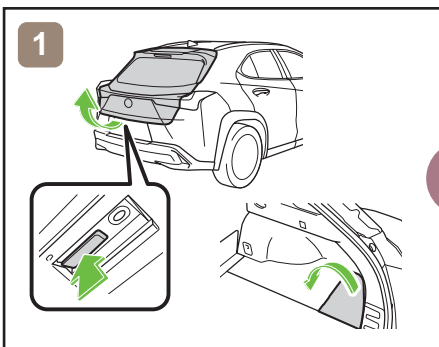
禁用车辆



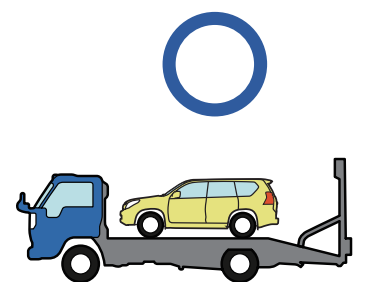
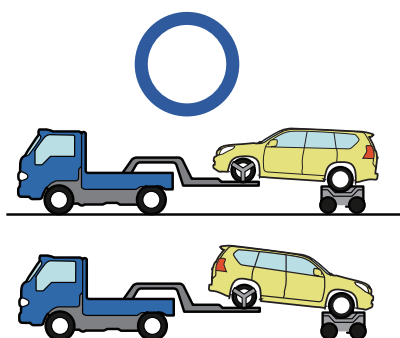
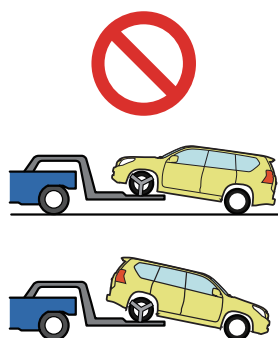
或



12V 蓄电池的操作



牵引信息



更多详情，请参考《应急指南》。
<http://www.toyota.co.jp/#####/>